



APARTMENT



LAUNCH BAY  
APARTMENTS



APARTMENT

# Apartment Level 1

Total floor area: 105 m<sup>2</sup>

2 BEDROOM



2 BATHROOM



1 CAR SPACE

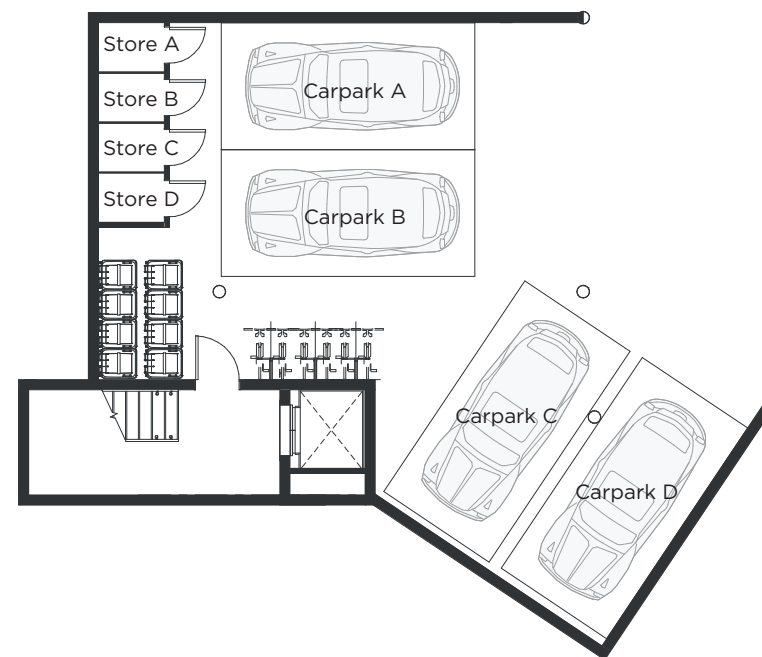
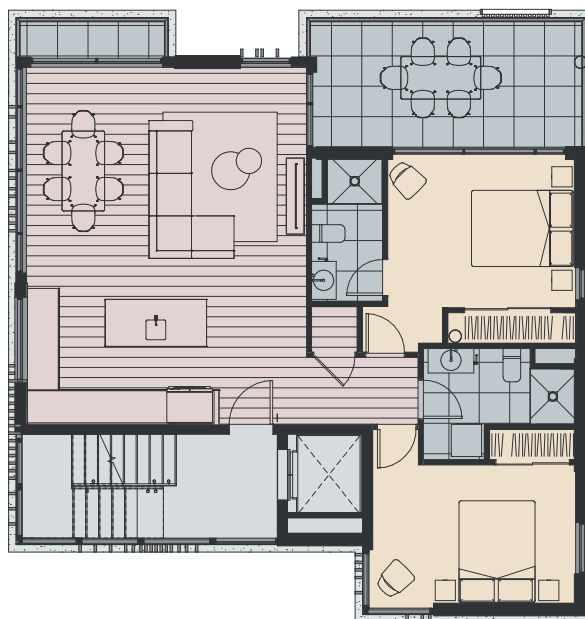


1 STORAGE LOCKER



**LAUNCH BAY**  
APARTMENTS

## Level 1

Floor area: 89 m<sup>2</sup>Balcony: 16 m<sup>2</sup>Total area: 105 m<sup>2</sup>

Disclaimer. The floor plan has been prepared for marketing purposes only. All descriptions, dimensions, depictions and other details in this floor plan may not be to scale and may vary to the property built. No third party has any authority to make or give any representation or warranty in relation to the property. Visit [winton.nz](http://winton.nz) for more information.



0 1 2 3 4m



# Apartment Specifications

## General Apartment Interiors

- 2.7m ceiling height to living areas and bedrooms
- Internal acoustic insulation between bathrooms and bedrooms
- Square stopped cornices
- Solid core doors (except cupboards)
- Built-in wardrobes to bedrooms
- Timber skirtings
- Dedicated storage
- Heat pump air conditioning system

## Laundry

- Laundry sink
- Extraction fans
- Built in storage

## Bathrooms

- Tiled shower with glass door and screen
- Large format mirror behind vanity with integrate cupboard
- LED feature lighting
- Chrome ladder heated towel rail
- Extraction fan

## Kitchens

- Quality stone 20mm bench-top
- Under mounted stainless-steel sink
- Tile splashback with feature lighting
- Full extension soft-close melamine cupboards and drawers and profiled recessed handles to cupboards
- Fisher & Paykel designer range appliances including 6 zone induction cooktop, multi-functioning wall oven, integrated rangehood and dishwasher
- Recycling and rubbish drawer beneath sink

## Finishes

- Solution dyed nylon carpets with thick underlay
- Large format tiles to bathrooms
- Engineered timber flooring to ground floor
- Solution dyed stainproof fibre carpet to garage floor

## Fittings

- Quality energy efficient LED light fittings
- Feature pendant lighting
- Satellite dish on roof and ultra-fast fibre

## Windows and Doors

- Double glazed aluminium joinery
- Coloured matching latches and hardware

## Landscaping and Common Areas

- Native trees and mass planted gardens
- Shared space living / access lane
- Communal open space with seating, shade trees, lawn and amenity garden



APARTMENT



LAUNCH BAY  
APARTMENTS



APARTMENT

## Apartment Level 2

Total floor area: 105 m<sup>2</sup>

2 BEDROOM



2 BATHROOM



1 CAR SPACE

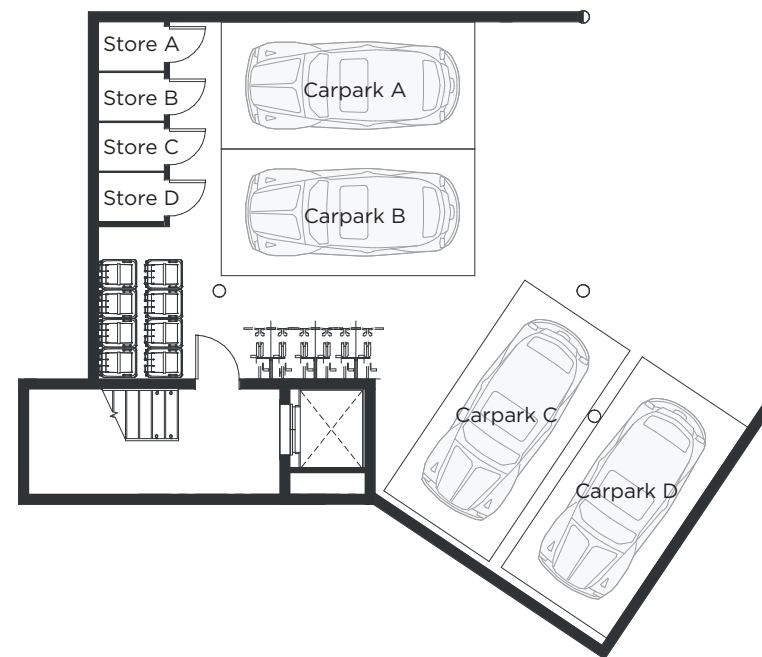


1 STORAGE LOCKER



**LAUNCH BAY**  
APARTMENTS

### Level 2

Floor area: 89 m<sup>2</sup>Balcony: 16 m<sup>2</sup>Total area: 105 m<sup>2</sup>

Disclaimer. The floor plan has been prepared for marketing purposes only. All descriptions, dimensions, depictions and other details in this floor plan may not be to scale and may vary to the property built. No third party has any authority to make or give any representation or warranty in relation to the property. Visit [winton.nz](http://winton.nz) for more information.



0 1 2 3 4m



# Apartment Specifications

## General Apartment Interiors

- 2.7m ceiling height to living areas and bedrooms
- Internal acoustic insulation between bathrooms and bedrooms
- Square stopped cornices
- Solid core doors (except cupboards)
- Built-in wardrobes to bedrooms
- Timber skirtings
- Dedicated storage
- Heat pump air conditioning system

## Laundry

- Laundry sink
- Extraction fans
- Built in storage

## Bathrooms

- Tiled shower with glass door and screen
- Large format mirror behind vanity with integrate cupboard
- LED feature lighting
- Chrome ladder heated towel rail
- Extraction fan

## Kitchens

- Quality stone 20mm bench-top
- Under mounted stainless-steel sink
- Tile splashback with feature lighting
- Full extension soft-close melamine cupboards and drawers and profiled recessed handles to cupboards
- Fisher & Paykel designer range appliances including 6 zone induction cooktop, multi-functioning wall oven, integrated rangehood and dishwasher
- Recycling and rubbish drawer beneath sink

## Finishes

- Solution dyed nylon carpets with thick underlay
- Large format tiles to bathrooms
- Engineered timber flooring to ground floor
- Solution dyed stainproof fibre carpet to garage floor

## Fittings

- Quality energy efficient LED light fittings
- Feature pendant lighting
- Satellite dish on roof and ultra-fast fibre

## Windows and Doors

- Double glazed aluminium joinery
- Coloured matching latches and hardware

## Landscaping and Common Areas

- Native trees and mass planted gardens
- Shared space living / access lane
- Communal open space with seating, shade trees, lawn and amenity garden





APARTMENT



LAUNCH BAY  
APARTMENTS



APARTMENT

## Apartment Level 3

Total floor area: 105 m<sup>2</sup>

2 BEDROOM



2 BATHROOM



1 CAR SPACE

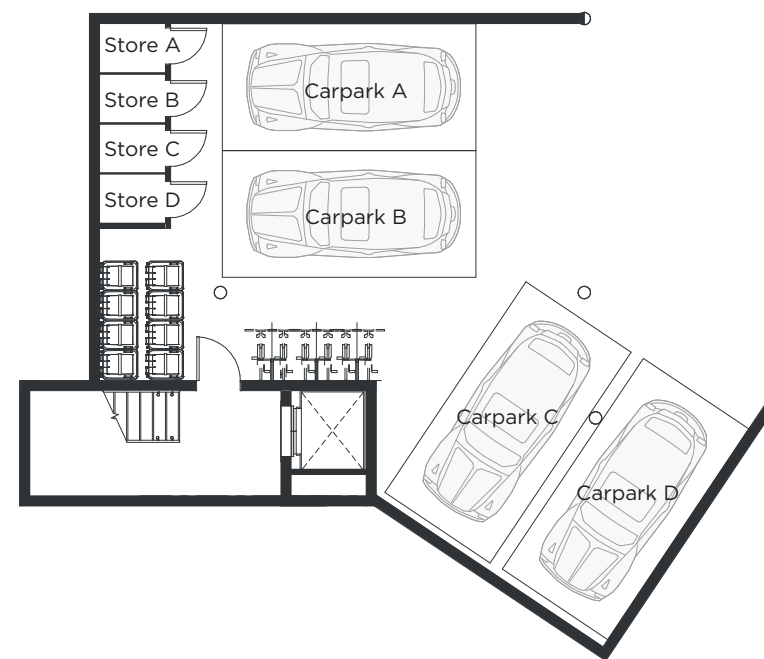


1 STORAGE LOCKER



**LAUNCH BAY**  
APARTMENTS

### Level 3

Floor area: 89 m<sup>2</sup>Balcony: 16 m<sup>2</sup>Total area: 105 m<sup>2</sup>

Disclaimer. The floor plan has been prepared for marketing purposes only. All descriptions, dimensions, depictions and other details in this floor plan may not be to scale and may vary to the property built. No third party has any authority to make or give any representation or warranty in relation to the property. Visit [winton.nz](http://winton.nz) for more information.



0 1 2 3 4m





# Apartment Specifications

## General Apartment Interiors

- 2.7m ceiling height to living areas and bedrooms
- Internal acoustic insulation between bathrooms and bedrooms
- Square stopped cornices
- Solid core doors (except cupboards)
- Built-in wardrobes to bedrooms
- Timber skirtings
- Dedicated storage
- Heat pump air conditioning system

## Laundry

- Laundry sink
- Extraction fans
- Built in storage

## Bathrooms

- Tiled shower with glass door and screen
- Large format mirror behind vanity with integrate cupboard
- LED feature lighting
- Chrome ladder heated towel rail
- Extraction fan

## Kitchens

- Quality stone 20mm bench-top
- Under mounted stainless-steel sink
- Tile splashback with feature lighting
- Full extension soft-close melamine cupboards and drawers and profiled recessed handles to cupboards
- Fisher & Paykel designer range appliances including 6 zone induction cooktop, multi-functioning wall oven, integrated rangehood and dishwasher
- Recycling and rubbish drawer beneath sink

## Finishes

- Solution dyed nylon carpets with thick underlay
- Large format tiles to bathrooms
- Engineered timber flooring to ground floor
- Solution dyed stainproof fibre carpet to garage floor

## Fittings

- Quality energy efficient LED light fittings
- Feature pendant lighting
- Satellite dish on roof and ultra-fast fibre

## Windows and Doors

- Double glazed aluminium joinery
- Coloured matching latches and hardware

## Landscaping and Common Areas

- Native trees and mass planted gardens
- Shared space living / access lane
- Communal open space with seating, shade trees, lawn and amenity garden



APARTMENT



LAUNCH BAY  
APARTMENTS



APARTMENT

# Ground Apartment

Total floor area: 112 m<sup>2</sup>

2 BEDROOM



2 BATHROOM



1 CAR SPACE

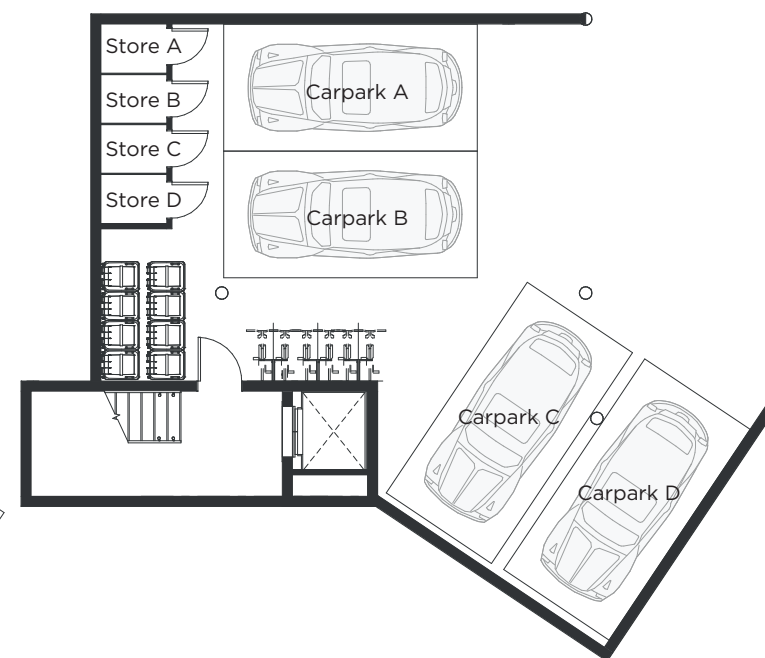
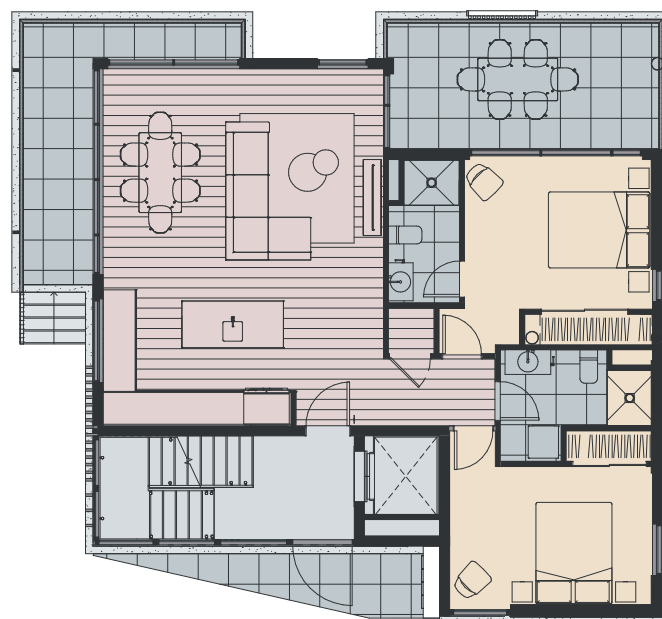


1 STORAGE LOCKER



**LAUNCH BAY**  
APARTMENTS

## Ground

Floor area: 88 m<sup>2</sup>Patio: 24 m<sup>2</sup>Total area: 112 m<sup>2</sup>

Disclaimer. The floor plan has been prepared for marketing purposes only. All descriptions, dimensions, depictions and other details in this floor plan may not be to scale and may vary to the property built. No third party has any authority to make or give any representation or warranty in relation to the property. Visit [winton.nz](http://winton.nz) for more information.



0 1 2 3 4m



# Apartment Specifications

## General Apartment Interiors

- 2.7m ceiling height to living areas and bedrooms
- Internal acoustic insulation between bathrooms and bedrooms
- Square stopped cornices
- Solid core doors (except cupboards)
- Built-in wardrobes to bedrooms
- Timber skirtings
- Dedicated storage
- Heat pump air conditioning system

## Laundry

- Laundry sink
- Extraction fans
- Built in storage

## Bathrooms

- Tiled shower with glass door and screen
- Large format mirror behind vanity with integrate cupboard
- LED feature lighting
- Chrome ladder heated towel rail
- Extraction fan

## Kitchens

- Quality stone 20mm bench-top
- Under mounted stainless-steel sink
- Tile splashback with feature lighting
- Full extension soft-close melamine cupboards and drawers and profiled recessed handles to cupboards
- Fisher & Paykel designer range appliances including 6 zone induction cooktop, multi-functioning wall oven, integrated rangehood and dishwasher
- Recycling and rubbish drawer beneath sink

## Finishes

- Solution dyed nylon carpets with thick underlay
- Large format tiles to bathrooms
- Engineered timber flooring to ground floor
- Solution dyed stainproof fibre carpet to garage floor

## Fittings

- Quality energy efficient LED light fittings
- Feature pendant lighting
- Satellite dish on roof and ultra-fast fibre

## Windows and Doors

- Double glazed aluminium joinery
- Coloured matching latches and hardware

## Landscaping and Common Areas

- Native trees and mass planted gardens
- Shared space living / access lane
- Communal open space with seating, shade trees, lawn and amenity garden